

# Live Blood Cell Comparison

## using the BioMat

Dark field microscopy was utilized to show the affects BioMat use has on live blood cells.

### FIGURE 1:

This live blood sample was taken from a 54 year old woman before she had a treatment on the BioMat.

The red blood cells were clumping together and moving very slowly.

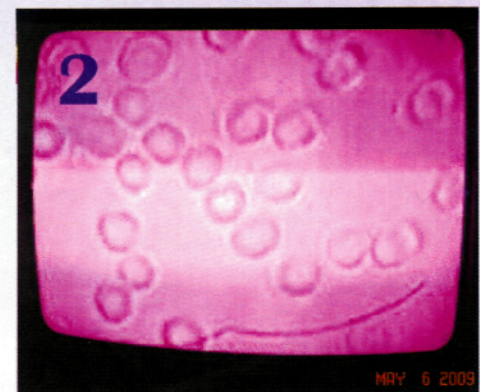
The BioMat Professional was heated to 158 degrees. The client laid on the BioMat and Amethyst Pillow for 30 minutes.

### FIGURE 2:

Immediately after her treatment, another blood sample was taken.

Every single red blood cell was separate and free flowing. Each cell now has space to absorb nutrients.

The cells were also moving quickly.  
What a difference!



Live Blood Cell Analysis /May 2009  
Female 54 Years Old